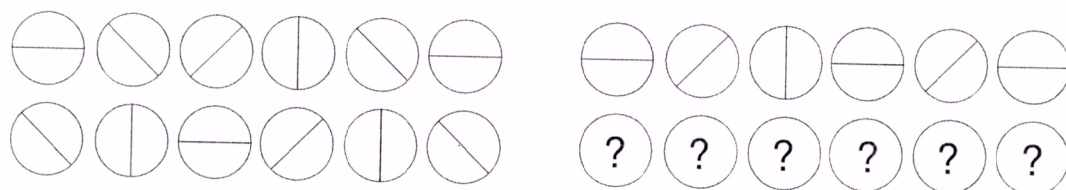


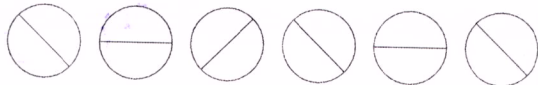

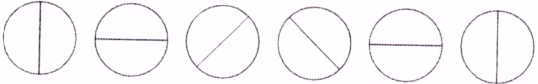


# ***IQ Test One***

Circle the answer(s), or write in the answer box provided.

1.



Which set of symbols should replace the question marks?

- A 
- B 
- C 
- D 
- E 

6 Advanced IQ tests

2. Select two words that are synonyms, plus an antonym of these two synonyms, from the list of words below.

choke, force, thrive, toil, wither, burgeon, strive

3. 19, 20, 21, ?, ?, 26, 28, 32, 33, 40

Which two numbers should replace the question marks?

Answer

4. The institution houses collections of objects of artistic, historic and scientific interest, and displayed for the edification and enjoyment of the public.

One word has been removed from the passage above. Select that word from the choice below and reinstate it into its correct place in the passage.

a. huge b. permanent c. produced d. conserved e. priceless  
f. accumulated

5. Which is the odd one out?

congregation, dispersion, compilation, convocation,  
aggregation

6.  $\Omega \# - \Omega \Omega \# \# - ? \Omega \# - \Omega \Omega \# \# - = \# \Omega \#$   
 $- \Omega \Omega \# \# - ? \Omega \# - \Omega \Omega \# \# - = \# \Omega \# - \Omega$   
 $\Omega \# \# - ? \Omega \# - \Omega \Omega \# \# - \Omega \# - \Omega \Omega \# \# - ?$   
 $\Omega \# - \Omega \Omega \# \# - = \#$

Which two symbols are missing?

a.  $\Omega \#$  b.  $- \Omega$  c.  $\# \#$  d.  $= \#$  e.  $- =$

7. Which number is the odd one out?

84129, 32418, 47632, 36119, 67626, 72927

8. Identify two words (one from each set of brackets) that form a connection (analogy), thereby relating to the words in capitals in the same way.

CAT (lash, parade, feline, whiskers)

SLEEP (somnia, night, bed, Morpheus)

9. Which word in brackets is closest in meaning to the word in capitals?

FLIPPANT (obverse, irreverent, feeble, candid, facile)

10.                    12593    is to    35291  
and                    29684    is to    46982  
therefore            72936    is to    ?

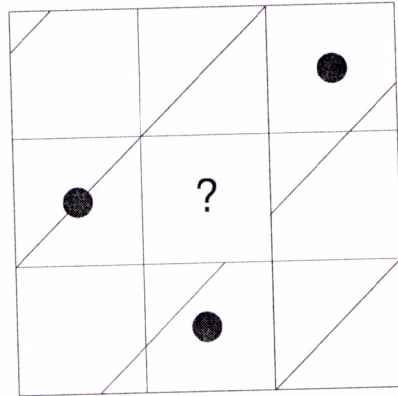
Answer

11.  $\frac{99}{?} = 24.75 \times 2^4$

Complete the equation by correctly identifying the missing part of the calculation from the list of options below.

a. 0.75    b.  $1.95 - 0.75$     c.  $0.5^2$     d. 0.825    e. 0.25

12.



Draw the contents of the middle tile in accordance with the rules of logic already established.

13. Insert numbers into the remaining blank squares so that the sums in each line and column are correct. All numbers to be inserted are less than 10.

	÷		×		=	6
+	■	-	■	×	■	+
	+		-	4	=	
÷	■	+	■	-	■	÷
	×	3	-		=	
=	■	=	■	=	■	=
	÷		+		=	

14. Identify a pair of anagrams from the list of words below.

intercom, carolean, fornicul, landrace, alderman, maladies, parlance, calendar, marlined, miracles, minerals, confined, barnacle

15. A Z B Y D W G T ? ?

Which two letters come next?

Answer

16.

14	27	56	18	76	32		68	64	71	19	25	49
5	9	11	9	13	5		?	?	?	?	?	?

The top set of six numbers has a relationship to the set of six numbers below. The two sets of six boxes on the left have the same relationship as the two sets of six boxes on the right. Which set of numbers should therefore replace the question marks?

A 

14	4	8	8	5	7
----	---	---	---	---	---

B 

16	9	4	10	3	13
----	---	---	----	---	----

C 

12	9	4	18	6	19
----	---	---	----	---	----

D 

12	10	9	8	5	7
----	----	---	---	---	---

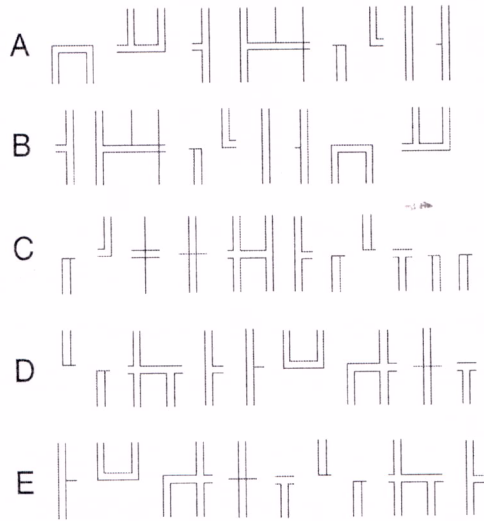
E 

14	10	8	10	7	13
----	----	---	----	---	----

17. How many cases do you need if you have to pack 112 pairs of shoes into cases that each hold 28 shoes?

Answer

18. Which is the odd one out?

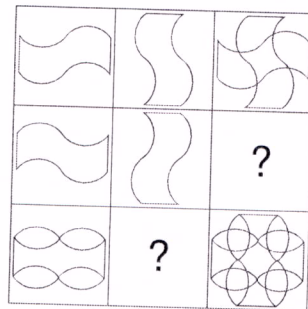


19. In the two numerical sequences below, one number that appears in the top sequence should appear in the bottom sequence and vice versa. Which two numbers should be changed round?

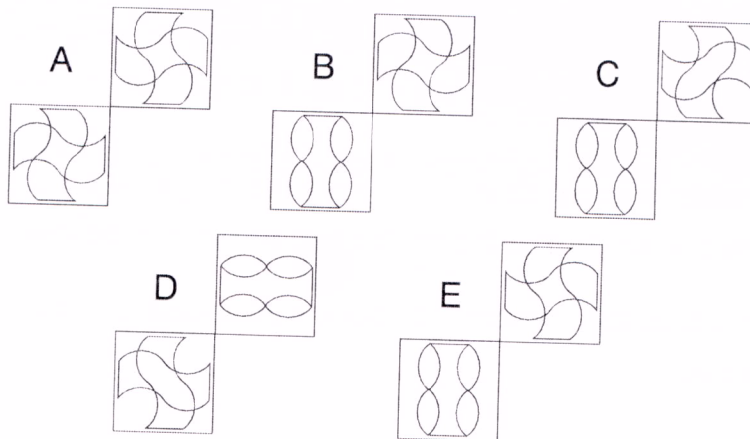
2, 2.5, 4.5, 6.75

1, 3, 6.25, 15.625

20.



Which two squares are missing?



21. Identify two words (one from each set of brackets) that form a connection (analogy), thereby relating to the words in capitals in the same way.

FRONT (inverse, ulterior, anterior, contraverse, obverse)

FACE (exterior, converse, countenance, obverse)

22. Change the position of four words only in the sentence below in order for it to make complete sense.

If you are printing on glossy paper or transparencies, place a support stack, or a sheet of plain media, beneath the sheet, or load only one sheet at a time.

12 Advanced IQ tests

23.  $? + (350 \times 0.84) = (620 \times 0.55) - \frac{\sqrt{1764}}{2}$

Complete the equation by correctly identifying the missing part of the calculation from the list of options below.

a.  $13.5 \times 2$    b.  $\frac{234}{9} + 1$    c.  $3^3 + 1$    d.  $\frac{120 \times 65\%}{3}$    e.  $\frac{61}{17} \times 2^2$

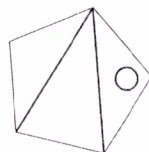
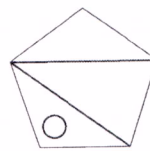
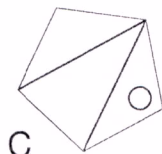
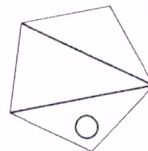
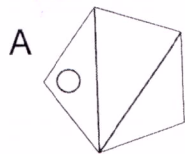
24. Which two words are most opposite in meaning?

acquired, derivative, archetypal, elaborate, enigmatic, spasmodic

25. Select two words that are synonyms, plus an antonym of these two synonyms, from the list of words below.

excuse, regulate, bestow, condone, concede, condemn, incarcerate

26. Which is the odd one out?



27. If 4 apples and 6 bananas cost £1.56 and 9 apples and 7 bananas cost £2.60, what is the cost of one apple and one banana?

Answer

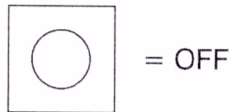
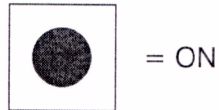
28. An electrical circuit wiring a set of four lights depends on a system of switches A, B, C and D. Each switch when working has the following effect on the lights:

Switch A turns lights 1 and 2 on/off or off/on

Switch B turns lights 2 and 4 on/off or off/on

Switch C turns lights 1 and 3 on/off or off/on

Switch D turns lights 3 and 4 on/off or off/on



In the following, switches C B D A are thrown in turn, with the result that Figure 1 is transformed into Figure 2. One of the switches is therefore not working and has had no effect on the numbered lights.

Identify which one of the switches is not working.

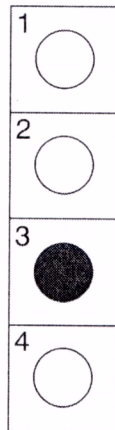


Figure 1

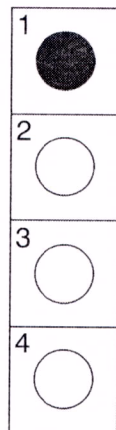
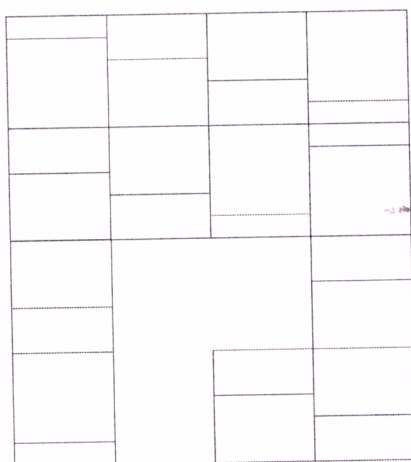
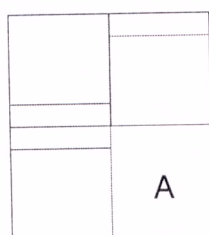


Figure 2

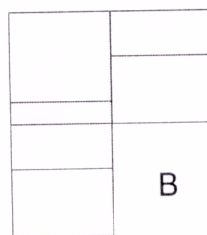
29.



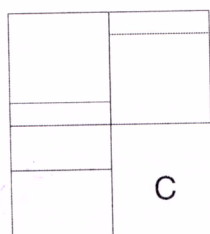
Which is the missing section?



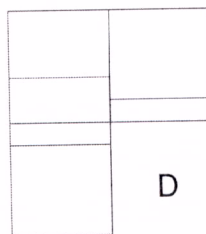
A



B



C



D

30. \_\_\_\_\_ is used for a \_\_\_\_\_ variety of \_\_\_\_\_, including the \_\_\_\_\_ of \_\_\_\_\_ data for oil and \_\_\_\_\_, the \_\_\_\_\_ of new \_\_\_\_\_ designs, the processing of \_\_\_\_\_, and the \_\_\_\_\_ of data from \_\_\_\_\_.

Insert the 15 words below into their correct position in the above passage.

analysis, analysis, applications, data, experiments, exploration, imagery, mineral, processing, processing, product, satellite, seismic, scientific, wide